

SELECT SET - 472 CASES



472-PWC-M9-BLK

PISTOLS

| Catalog Number | Exterior Dimensions Interior Dimensions | Description |
|-------------------|--|--|
| 472-PWC-M9-BLK | 11.80" x 9.80" x 4.70" 9.50" x 7.50" x 4.25" | Securely protects one M9 Pistol with room for magazines and accessories. |
| 472-PWC-M9-2-BLK | 16.20" x 12.70" x 6.60" 15.00" x 10.50" x 6.00" | Encloses up to four M9s, 1911s or other tactical handguns with room for four additional magazines. |
| 472-PWC-M9-12-BLK | 31.30" x 20.40" x 12.20" 29.00" x 18.00" x 10.50" | Secures twelve M9 Pistols plus twelve magazines. Ship, store, and deploy with confidence. |
| 472-PWC-M9-20-BLK | 31.30" x 20.40" x 12.20" 29.00" x 18.00" x 10.50" | Securely transports twenty M9s or 1911 Pistols along with twenty extra magazines. |



472-PWC-MP5-BLK

SUBMACHINE GUNS

| Catalog Number | Exterior Dimensions Interior Dimensions | Description |
|--------------------|--|-------------|
| 472-PWC-HK-UMP-BLK | 20.00" x 14.70" x 5.80" 18.20" x 12.10" x 5.20" | - |
| 472-PWC-MP5-BLK | 39.80" x 16.50" x 6.70" 36.50" x 14.00" x 6.00" | - |

ASSAULT RIFLES



472-PWC-M4-BLK

| Catalog Number | Exterior Dimensions Interior Dimensions | Description |
|----------------------|--|--|
| 472-PWC-M4-BLK | 39.80" x 16.50" x 6.70" 36.50" x 14.00" x 6.00" | Protects one M4 with or without M203 attached plus seven thirty-round magazines and one M9 Pistol with two spare magazines. |
| 472-PWC-M4-SF-BLK | 47.20" x 16.50" x 6.70" 44.00" x 14.00" x 6.00" | Specifically designed for the Special Forces to fit one M4 with SOPMOD accessories including one extra short barreled M4 upper and one M9 Pistol with Tactical Light. |
| 472-PWC-M14-1-BLK | 53.80" x 16.50" x 6.70" 50.50" x 14.00" x 6.00" | Transports an M14 or M25 with attached scope, bipod cleaning kit and four magazines |
| 472-PWC-M16-3200-BLK | 47.20" x 16.50" x 6.70" 44.00" x 14.00" x 6.00" | - |
| 472-PWC-M16-BLK | 53.80" x 16.50" x 6.70" 50.50" x 14.00" x 6.00" | Holds one M16 or M4 with or without M203 by quick removal of foam spacers. With plenty of room to spare for seven thirty-round magazines, an M9 Pistol, and accessories. |
| 472-PWC-M16-2-BLK | 53.80" x 16.50" x 6.70" 50.50" x 14.00" x 6.00" | Protects two M16s with space for six magazines and accessories. |
| 472-PWC-SCAR-BLK | 53.80" x 16.50" x 6.70" 50.50" x 14.00" x 6.00" | - |
| 472-M4-M16-4-032 | 44.80" x 34.00" x 18.50" N/A | Holds four fully equipped M4s or M16s or any combination (two M4s and M16s) up to four. Container can also be used as a lockable rifle rack to keep all weapons safe and secure. Locking bar protects weapons from being disassembled. |
| 472-M4-M16-6-032 | 45.40" x 24.00" x 18.5" N/A | Fits any combination of six M4s or M16s. |
| 472-M4-M16-8-032 | 44.80" x 34.00" x 26.5" N/A | Secures eight fully equipped M4s or M16s or any combination (two M4s and two M16s) up to eight. Container can also be used as a lockable rifle rack to keep all weapons safe and secure. Locking bar protects weapons from being disassembled. |
| 472-M4-M16-12-032 | 45.40" x 24.00" x 26.5" | Protects any combination of twelve M4s or M16s. |

SHOTGUN

| Catalog Number | Exterior Dimensions Interior Dimensions | Description |
|------------------|--|-------------|
| 472-PWC-R870-BLK | 47.20" x 16.50" x 6.70" 44.00" x 14.00" x 6.00" | - |

SNIPER RIFLES

| Catalog Number | Exterior Dimensions Interior Dimensions | Description |
|-------------------|--|--|
| 472-PWC-M24A2-BLK | 53.80" x 16.50" x 6.70" 50.50" x 14.00" x 6.00" | Securely packs an M24A2 rifle with scope and accessories in this iM3300. |
| 472-PWC-M24A3-BLK | 53.80" x 16.50" x 6.70" 50.50" x 14.00" x 6.00" | - |



472-PWC-M24A2-BLK

MACHINE GUNS

| Catalog Number | Exterior Dimensions Interior Dimensions | Description |
|--------------------|--|--|
| 472-PWC-M240B-BLK | 53.80" x 16.50" x 6.70" 50.50" x 14.00" x 6.00" | Safely secures one M240B with room for accessories. Also will hold the M240G with its Infantry Modification Kit. |
| 472-PWC-M249-BLK | 53.80" x 16.50" x 6.70" 50.50" x 14.00" x 6.00" | Securely packs one M249 with room for accessories including an M9 Pistol. |
| 472-PWC-M249-P-BLK | 39.80" x 16.50" x 6.70" 36.50" x 14.00" x 6.00" | Transports one M249 PARA with room for accessories including an M9 Pistol. |
| 472-PWC-M1919-BLK | 53.80" x 16.50" x 6.70" 50.50" x 14.00" x 6.00" | - |
| 472-PWC-M60-BLK | 53.80" x 16.50" x 6.70" 50.50" x 14.00" x 6.00" | Transports one M60 and one M9 Pistol with two spare magazines with ample room for additional accessories. |



472-PWC-M240B-BLK



472-PWC-M32-BLK

GRANADE LAUNCHER

| Catalog Number | Exterior Dimensions Interior Dimensions | Description |
|-----------------|--|--|
| 472-PWC-M32-BLK | 47.20" x 16.50" x 9.20" 44.00" x 14.00" x 8.50" | Securely fits one M32 multi-shot grenade launcher. |

SOFT BAGS/case set

| Catalog Number | Exterior Dimensions Interior Dimensions | Description |
|------------------------|--|-------------|
| 472-PWC-DW3100-BLK-BLK | 39.80" x 16.50" x 6.70" 36.50" x 14.00" x 6.00" | - |
| 472-PWC-DW3200-BLK-BLK | 47.20" x 16.50" x 6.70" 44.00" x 14.00" x 6.00" | - |
| 472-PWC-DW3300-BLK-BLK | 53.80" x 16.50" x 6.70" 50.50" x 14.00" x 6.00" | - |
| 472-PWC-DW3220-BLK-BLK | 47.20" x 16.50" x 9.20" 44.00" x 14.00" x 8.50" | - |



472-PWC-DW3100-BLK-BLK



SELECT SET - RACKMOUNT CASES

BLACKBOX

- Engineered racks provide a secure and mobile electronics enclosure
- Shock mounts provide 2" (5.1 cm) of sway space to isolate equipment
- Molded-in rib design provides secure stacking and interlock
- Patented wide-design Comfort Grip Handles™ make lifting easy
- Black hardware is long-lasting and fastens securely
- Automatic pressure relief valve
- Airtight and watertight
- Lightweight and compact
- 2 wheels



BB0030-000-110



BB0040-000-110



BB0050-000-110



BB0070-000-110



BB0090-000-110



BB0110-000-110



BB0140-000-110

| Catalog Number | U-size | Lid Interior Dimension (front) | Lid Interior Dimension (back) | Rack L x W x H | Exterior Dimensions |
|----------------|--------|--------------------------------|-------------------------------|--------------------------|--------------------------|
| BB0030-000-110 | 3U | 2.2" | 5.2" | 24.00" x 19.00" x 5.25" | 38.50" x 24.60" x 11.40" |
| BB0040-000-110 | 4U | 2.2" | 5.2" | 24.00" x 19.00" x 7.00" | 38.50" x 24.60" x 13.10" |
| BB0050-000-110 | 5U | 2.2" | 5.2" | 24.00" x 19.00" x 8.75" | 38.50" x 24.60" x 14.90" |
| BB0070-000-110 | 7U | 2.2" | 5.2" | 24.00" x 19.00" x 12.25" | 38.50" x 24.60" x 18.40" |
| BB0090-000-110 | 7U | 2.2" | 5.2" | 24.00" x 19.00" x 15.75" | 38.50" x 24.60" x 21.90" |
| BB0110-000-110 | 7U | 2.2" | 5.2" | 24.00" x 19.00" x 19.25" | 38.50" x 24.60" x 25.40" |
| BB0140-000-110 | 7U | 2.2" | 5.2" | 24.00" x 19.00" x 24.50" | 38.50" x 24.60" x 30.60" |



SELECT SET - SINGLE LID CASES

TRUNK



- Comfort Grip Handles™ • Positive anti-shear locks, which prevent lid separation after impact
- Reinforced corners and edges for additional impact protection
- Molded-in ribs and corrugations for secure, non-slip stacking, columnar strength and added protection
- Recessed hardware for extra protection

| Catalog Number | Exterior Dimensions | Interior Dimensions | Base Depth | Lid Depth/Type | Special Features |
|--------------------|--------------------------|--------------------------|------------|--------------------|---------------------|
| AL2624-1205-RP-032 | 29.06" x 27.00" x 20.69" | 26.06" x 24.00" x 16.93" | 11.87" | 5.06"/ Hinged Lid | |
| AL3018-0905-RP-032 | 32.75" x 20.87" x 16.43" | 29.75" x 17.87" x 14.62" | 9.37" | 5.25"/ Hinged Lid | |
| AL3018-1505-110 | 32.75" x 20.87" x 21.93" | 29.75" x 17.87" x 20.12" | 14.87" | 5.25"/ Hinged Lid | |
| AL3424-1205-RP-032 | 37.25" x 27.18" x 19.44" | 34.25" x 24.18" x 17.25" | 12.00" | 5.25"/ Hinged Lid | wheels |
| AL3418-1005-110 | 37.18" x 20.87" x 17.31" | 34.18" x 17.87" x 15.37" | 10.12" | 5.25"/ Hinged Lid | wheels |
| AL3424-0805-RP-032 | 37.25" x 27.18" x 15.44" | 34.25" x 24.18" x 13.25" | 8.00" | 5.25"/ Hinged Lid | |
| AL3620-1710-RP-032 | 38.87" x 22.87" x 29.46" | 35.87" x 19.87" x 27.27" | 17.12" | 10.15"/ Hinged Lid | |
| AL4024-1305-110 | 42.87" x 27.31" x 20.19" | 39.87" x 24.31" x 18.00" | 12.75" | 5.25"/ Hinged Lid | |
| AL4824-1404-RP-032 | 51.62" x 27.62" x 21.36" | 48.62" x 24.62" x 17.67" | 13.80" | 3.87"/ Hinged Lid | |
| AL4824-1604-RP-032 | 51.62" x 27.62" x 23.36" | 48.62" x 24.62" x 19.67" | 15.80" | 3.87"/ Hinged Lid | wheels |
| AL5424-2306-110 | 56.87" x 26.93" x 33.75" | 53.87" x 23.93" x 28.87" | 22.75" | 6.12"/ Hinged Lid | forklift skidrunner |

FLAT



- Comfort Grip Handles™
- Reinforced corners and edges for additional impact protection
- Molded-in ribs and corrugations for secure, non-slip stacking, columnar strength and added protection
- Positive anti-shear locks, which prevent lid separation after impact
- Recessed hardware for extra protection

| Catalog Number | Exterior Dimensions | Interior Dimensions | Base Depth | Lid Depth/Type | Special Features |
|--------------------|--------------------------|--------------------------|------------|-----------------------|------------------|
| AL1616-0505-110 | 18.75" x 18.88" x 12.19" | 15.75" x 15.88" x 10.54" | 5.42" | 5.12"/ Removable Lid | |
| AL2013-0903-110 | 22.87" x 16.00" x 13.94" | 19.87" x 13.00" x 12.25" | 9.25" | 3.00"/ Hinged Lid | |
| AL3022-0705-RP-032 | 33.00" x 25.18" x 13.97" | 30.00" x 22.18" x 12.18" | 7.00" | 5.18"/ Hinged Lid | |
| AL5415-1026-110 | 57.00" x 18.88" x 37.50" | 54.00" x 15.88" x 36.38" | 10.00" | 25.38"/ Removable Lid | wheels |



LONG



- Comfort Grip Handles™ • Positive anti-shear locks, which prevent lid separation after impact
- Reinforced corners and edges for additional impact protection
- Molded-in ribs and corrugations for secure, non-slip stacking, columnar strength and added protection
- Recessed hardware for extra protection

| Catalog Number | Exterior Dimensions | Interior Dimensions | Base Depth | Lid Depth/Type | Special Features |
|--------------------|--------------------------|--------------------------|------------|-------------------|------------------|
| AL5616-0604-RP-032 | 59.43" x 19.25" x 12.76" | 56.43" x 16.25" x 10.07" | 5.87" | 4.20"/ Hinged Lid | |
| AL6912-1003-110 | 72.37" x 15.00" x 16.28" | 69.37" x 12.00" x 14.09" | 10.49" | 3.60"/ Hinged Lid | |

CUBE



- Comfort Grip Handles™ • Positive anti-shear locks, which prevent lid separation after impact
- Reinforced corners and edges for additional impact protection
- Molded-in ribs and corrugations for secure, non-slip stacking, columnar strength and added protection
- Recessed hardware for extra protection

| Catalog Number | Exterior Dimensions | Interior Dimensions | Base Depth | Lid Depth/Type | Special Features |
|-----------------|--------------------------|--------------------------|------------|-----------------------|---------------------|
| AL2624-1805-110 | 29.06" x 27.00" x 26.62" | 26.06" x 24.00" x 22.87" | 17.81" | 5.06"/ Hinged Lid | |
| AL3834-1617-110 | 41.12" x 37.12" x 38.82" | 38.12" x 34.12" x 33.00" | 15.75" | 17.25"/ Removable Lid | forklift skidrunner |

MOBILE MASTER



- ?
- ?
- ?
- ?

| Catalog Number | Exterior Dimensions | Interior Dimensions | Base Depth | Lid Depth/Type | Special Features |
|----------------------|--------------------------|---------------------|------------|----------------|------------------|
| 472-463L-MM24-CEM032 | 51.60" x 27.40" x 23.40" | ? | ? | ? | ? |
| 472-463L-MM36-CEM032 | 34.40" x 27.40" x 23.40" | ? | ? | ? | ? |



VERSAFILL

The new Pelican-Hardigg VersaFill tote is ideal for warehouse and manufacturing floors. These sturdy containers are designed for the storing and transport of items such as plastic pellets and other bulk components. Pelican-Hardigg's VersaFill totes are virtually indestructible and reusable for all your bulk material handling needs.

VersaFill totes can be easily moved with a pallet jack or forklift and are stackable with lid in place for efficient storage. Optional liner creates a smooth surface for easy removal of fine-grained items. You can now store and transport bulk items safely, securely and worry-free.

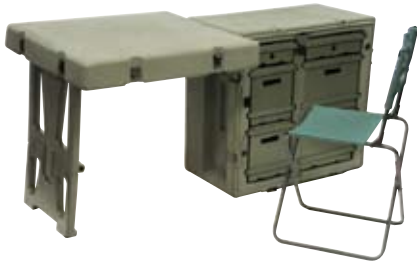
- Virtually Indestructible
- Reusable
- Chemically Inert
- Safe to Ship
- Optional Liner
- Manufactured in the USA
- Pallet Jack / Forklift Provisions
- Stackable
- Includes Lid



| Catalog Number | Exterior Dimensions | Liner Included |
|-----------------|-----------------------|----------------|
| VERSAFILL-E-032 | 45.0" x 44.0" x 45.0" | No |
| VERSAFILL-L-032 | 45.0" x 44.0" x 45.0" | Yes |

SPECIALTY PRODUCTS

Our specialty products are well engineered portable workspace solutions. These specialty products range from portable desks that set up in minutes to storage chests with metal drawers and dividers to keep all your supplies safe and organized. For protecting personal gear, our footlockers and trunklockers are lightweight and lockable. Whatever your need, whatever the environment, we have a durable solution to keep the job moving along.



FD3121-0000-130
Single Field Desk



FD3429-0000-130
Double Duty Field Desk



472-ADMIN-DESK-032
Administrative Field Desk

| Catalog Number | Collapsed Form | Extended Form | Special Features |
|--------------------|--------------------------|---------------------------|--|
| FD3121-0000-130 | 30.70" x 21.00" x 28.50" | 61.40" x 28.50" x 28.50" | <ul style="list-style-type: none"> • 1 Large work surface, chair, and drawers • 6 Drawers: 2 shallow (padlock for extra security), 2 deep, 2 file sizes • 1 Chair: load rated to 300 lbs. (136 kg each) • Airtight and watertight |
| FD3429-0000-130 | 34.00" x 28.50" x 24.90" | 102.00" x 28.50" x 28.50" | <ul style="list-style-type: none"> • 2 Large desk surfaces, with rolling casters • 6 Drawers: 2 shallow (padlock for extra security), 2 deep, 2 file sizes • 2 Casters • 2 Chairs: Load rated to 300 lbs. (136 kg each) • Airtight and watertight |
| 472-ADMIN-DESK-032 | 30.80" x 21.00" x 28.50" | N/A | |



472-TANKM-D-2-032
Tankmate



472-BKSH-100-032
Bookshelf

| Catalog Number | Collapsed Form | Extended Form | Special Features |
|-------------------|--------------------------|---------------|---|
| 472-TANKM-D-2-032 | 26.10" x 14.90" x 5.40" | N/A | <ul style="list-style-type: none"> • Impervious to temperature and impact • molded in handles • holds two D 95 GL tanks |
| 472-BKSH-100-032 | 42.80" x 27.30" x 20.80" | N/A | <ul style="list-style-type: none"> • Six shelves for ample storage • casters for transport • Weatherproof and watertight |





TL3619-0000-130
Trunklocker



FT3317-0000-130
Footlocker



MC3000-3018-130
Medchest 3



MC4100-0040-130
Medchest 4 drawer



MC8100-0080-130
Medchest 8 drawer



472-FTLK-1-032
Footlocker



472-TRLK-S-032
Military trunklocker



472-MED-4-TOTE-032
Med 4 tote

| Catalog Number | Exterior Dimensions | Interior Dimensions | Special Features |
|--------------------|--------------------------|--------------------------|---|
| TL3619-0000-130 | 36.27" x 18.50" x 19.56" | 32.88" x 15.00" x 17.75" | <ul style="list-style-type: none"> Storage locker • Extra-deep storage cavity • Two press & pull latches Injection molded outer shell • Two organization trays Molded-in stacking ribs • Water resistant |
| FT3317-0000-130 | 33.00" x 17.00" x 17.00" | 29.00" x 14.00" x 15.00" | <ul style="list-style-type: none"> 2 wheels • 2 black trays • Spring loaded butterfly latches Airtight and watertight |
| MC3000-3018-130 | 32.75" x 20.87" x 12.61" | 30.00" x 18.00" x 11.00" | <ul style="list-style-type: none"> Storage chest • 2 wheels • Made from fire retardant material Spring loaded butterfly latches • 3x5" (7.6 x 12.7cm) Card holder Airtight and watertight |
| MC4100-0040-130 | 32.75" x 20.87" x 12.61" | N/A | <ul style="list-style-type: none"> Four-drawer case with full extension sliding drawers • 2 wheels Spring loaded butterfly latches • Full-extension ball-bearing slides Made from fire retardant material • Airtight and watertight Customizable divider system |
| MC8100-0080-130 | 32.75" x 20.87" x 12.61" | N/A | <ul style="list-style-type: none"> Eight-drawer case with full extension sliding drawers • 2 wheels Spring loaded butterfly latches • Full-extension ball-bearing slides Made from fire retardant material • Airtight and watertight Customisable divider system • One lockable drawer Removable stainless-steel work tray • Comfort Grip Handles™ |
| 472-FTLK-1-032 | 33.00" x 17.00" x 14.00" | 29.00" x 14.00" x 12.00" | <ul style="list-style-type: none"> Gasketed tongue and groove closure • reinforced corners positive anti-shear latches • locking latch • plastic handles • stackable design. |
| 472-TRLK-S-032 | 24.00" X 20.12" X 12.38" | 21.00" X 17.00" X 11.00" | <ul style="list-style-type: none"> Top layer plastic tray |
| 472-MED-4-TOTE-032 | N/A | 29.00" x 18.00" x 10.80" | <ul style="list-style-type: none"> Removable lid • comfort grip handles • edge casters for transport pressure equalization vent • Two tote sizes for medical items |

